

atrin **electronic**

Expertise, variety and quality



www.atrinelec.com

آترین الکترونیک

تخصص، تنوع و کیفیت

02166766957 - 02166766927



info@atrinelec.com



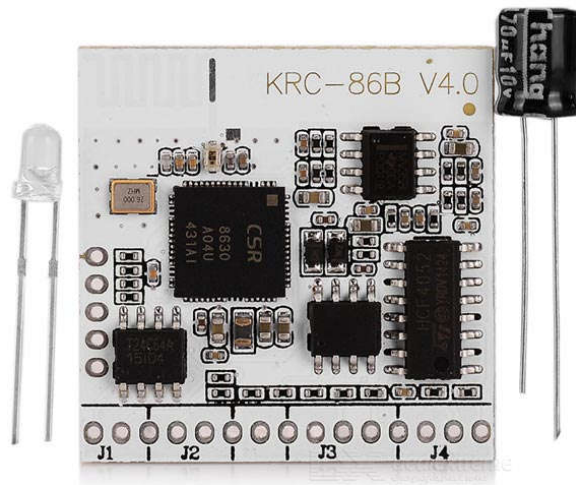
تهران پاساژ امجد طبقه 1 واحد 16



@atrinelec



KRC-86B V4.0 is based on the CSR 8630 bluetooth chip it is perfect for creating your own wireless speaker or headphones or for any other use where you need to add a bluetooth audio receiver to your project. It also supports an AUX input with automatic source selection.



Features:

- Bluetooth version: V4.0 + EDR
- Range:10-20 meters(depending on environment)
- Size : 30x30 mm
- Power:3-5V DC
- AUX audio input
- Stereo audio output
- Bluetooth connection
- Button/MCU connection interface
- Weight : 5 g

Module Function:

1. Upon power up the device connects AUX to output
2. The module attempts to connect to the last paired bluetooth device, LED will be blinking
3. If the device cannot connect to the last paired device it will go into pairing mode
4. After connection the LED will become solid and output will be from bluetooth and EN pin will be high

Connection:

VCC: Power Supply (+3 V-+5 V)

GND: Ground

LED +: LED Status positive

LED -: LED status negative

AGND: Received audio signal negative

OUTR: Right channel output

OUTL: Left channel output

INR: AUX Right channel input

INL: AUX Left channel input

PLAY / STOP: Play stop button

VOL + / NEXT: Short press next, long press volume up

VOL-/PREV: Short press previous, long press volume down

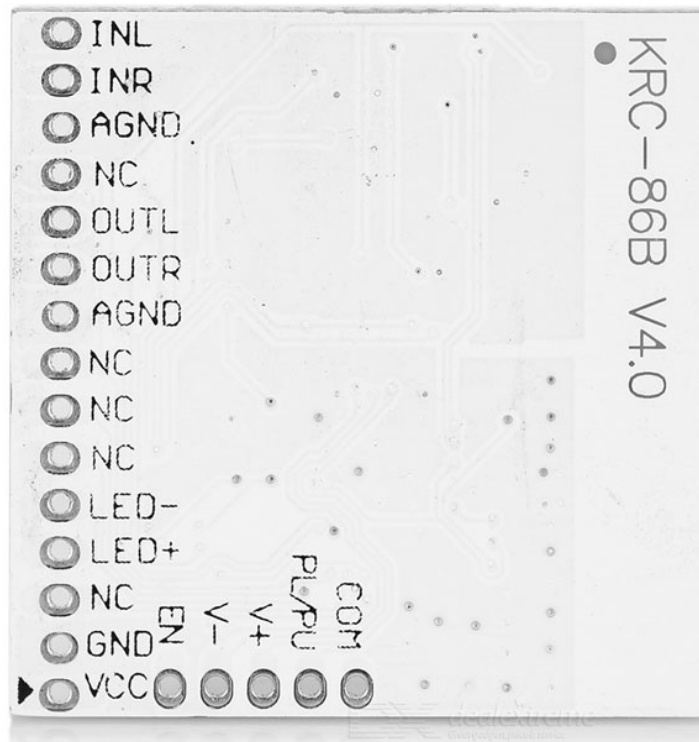
EN: Bluetooth connection indicator

3.3 V Connected

0V Disconnect

NC: Function Reserved

Note: NC pins must be left open or else the module may be damaged



AUX Input Function

When there is no bluetooth connection the output will be from the AUX channel when there is a bluetooth connection the output will be from the bluetooth source. This is switched automatically.